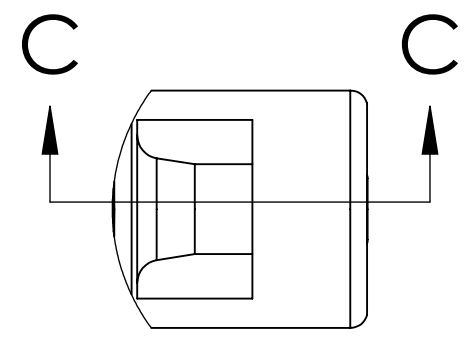
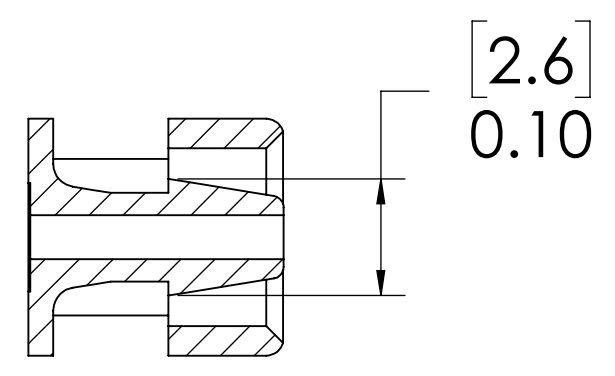


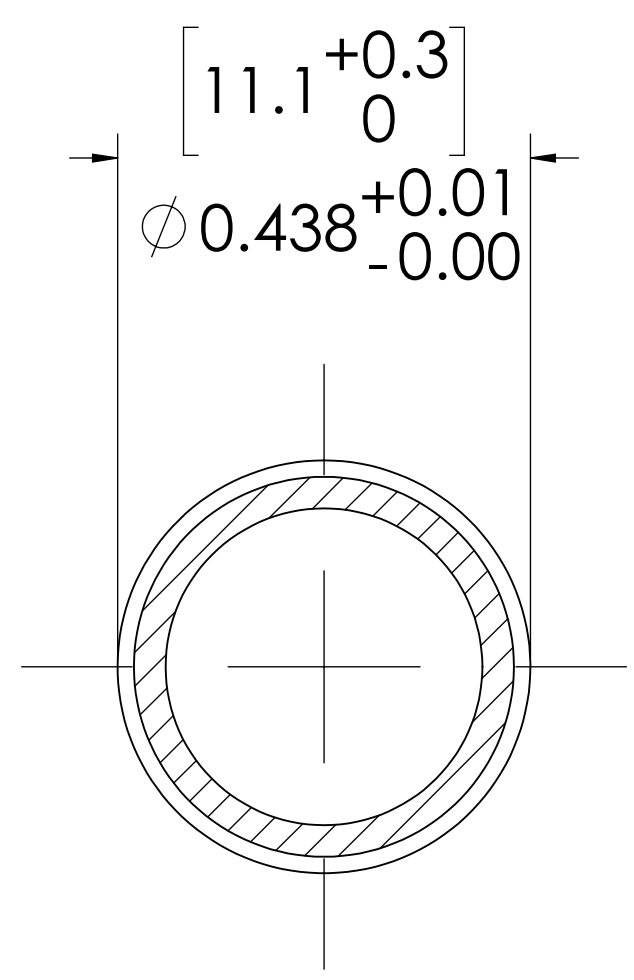
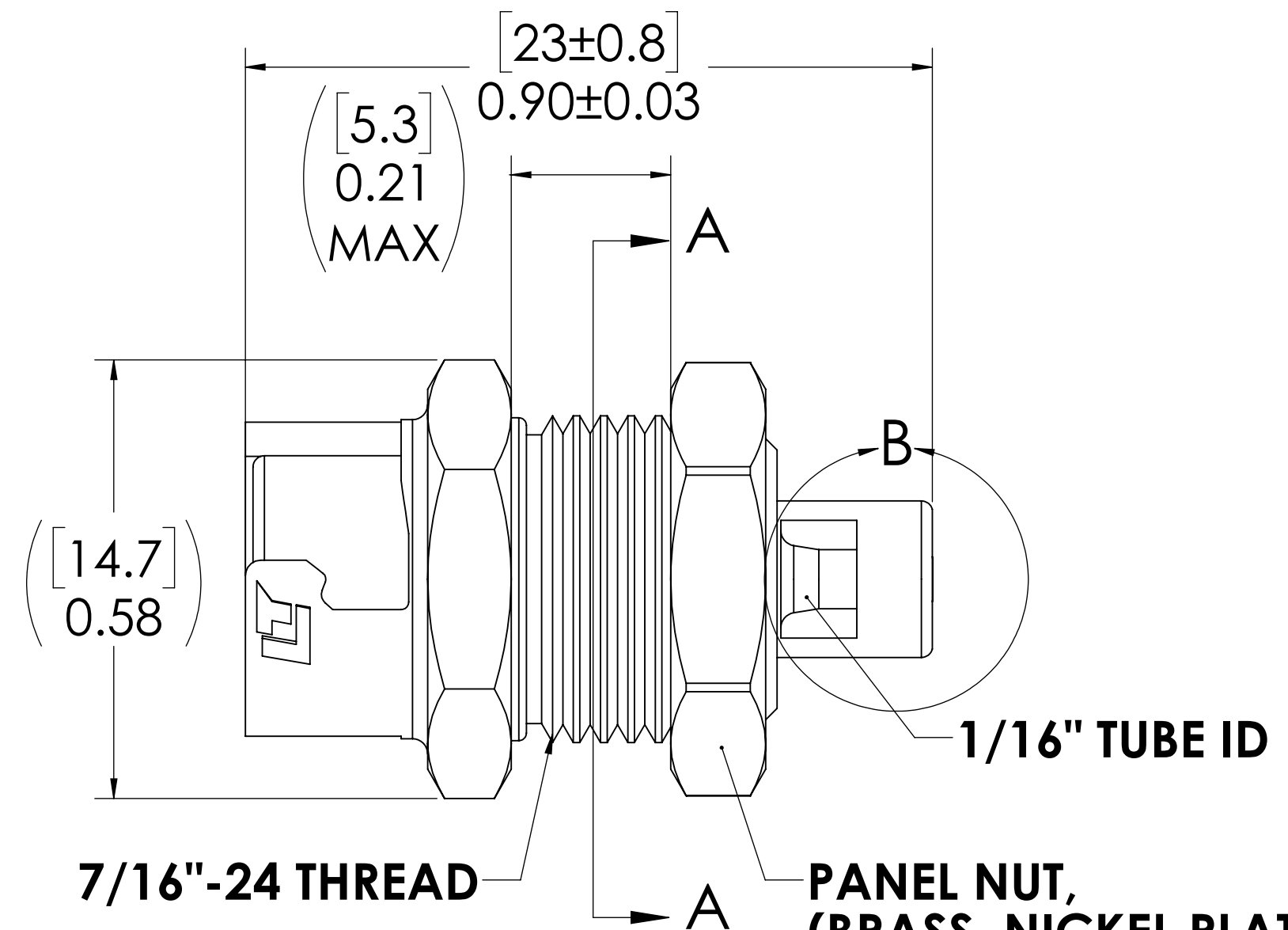
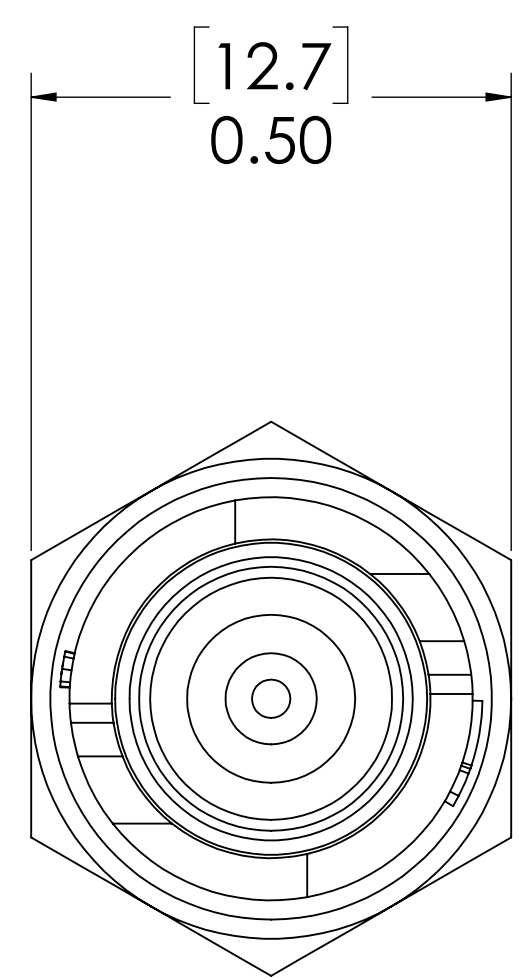
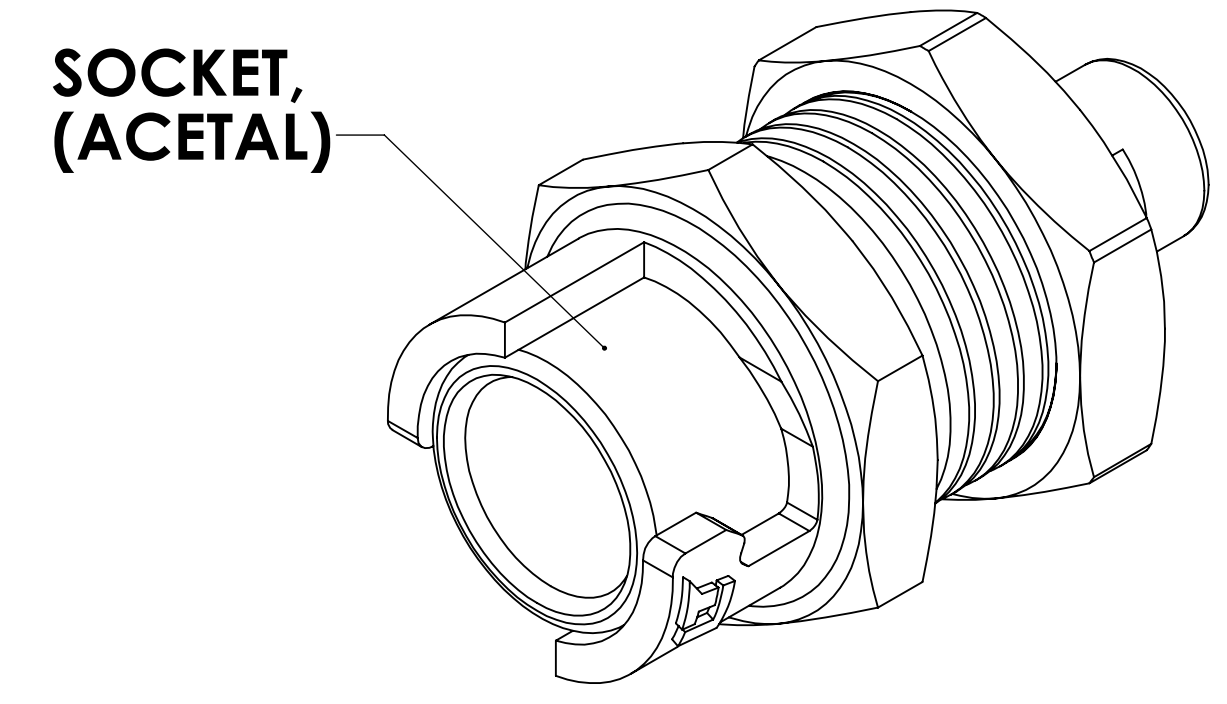
REVISIONS						
SHEET	ZONE	REV.	ECO	DESCRIPTION	DATE	APPROVED
ALL	ALL	A	50307	INITIAL RELEASE	1/10/2020	HRC



DETAIL B



SECTION C-C



PANEL OPENING SECTION A-A

**FOR REFERENCE ONLY**

- NOTES:**
- MATERIAL: ACETAL
  - COLOR: BLACK

<small>UNLESS OTHERWISE SPECIFIED:          DIMENSIONS ARE IN INCHES          TOLERANCES:          FRACTIONAL ± 1/32          ANGULAR: MACH ± 0.5 BEND ± 2          ONE PLACE DECIMAL ± 0.1          TWO PLACE DECIMAL ± 0.01          THREE PLACE DECIMAL ± 0.005          TWO PLACE DUAL (mm) [±0.12]</small>	DRAWN	RDA	10/17/2019	
	CHECKED	HRC	10/17/19	
	ENG APPR.	HRC	1/10/20	
	MFG APPR.	BDB	1/10/20	
<small>PROPRIETARY AND CONFIDENTIAL          THE INFORMATION CONTAINED IN THIS DRAWING IS THE SOLE PROPERTY OF LINKTECH LLC. ANY REPRODUCTION OR DISCLOSURE IN PART OR AS A WHOLE WITHOUT THE WRITTEN PERMISSION OF LINKTECH LLC IS STRICTLY PROHIBITED.</small>	Q.A.	JJB	1/10/20	PART NO: 10AC-S3-01BLK DESCRIPTION: LinkTech 10AC Series Panel Mt. Female, Non-valved, 116 HB, Black, Acetal
SIZE DWG. NO. REV <b>C</b> 10AC100105 <b>A</b>		SCALE: NTS WEIGHT: SHEET 1 OF 1		